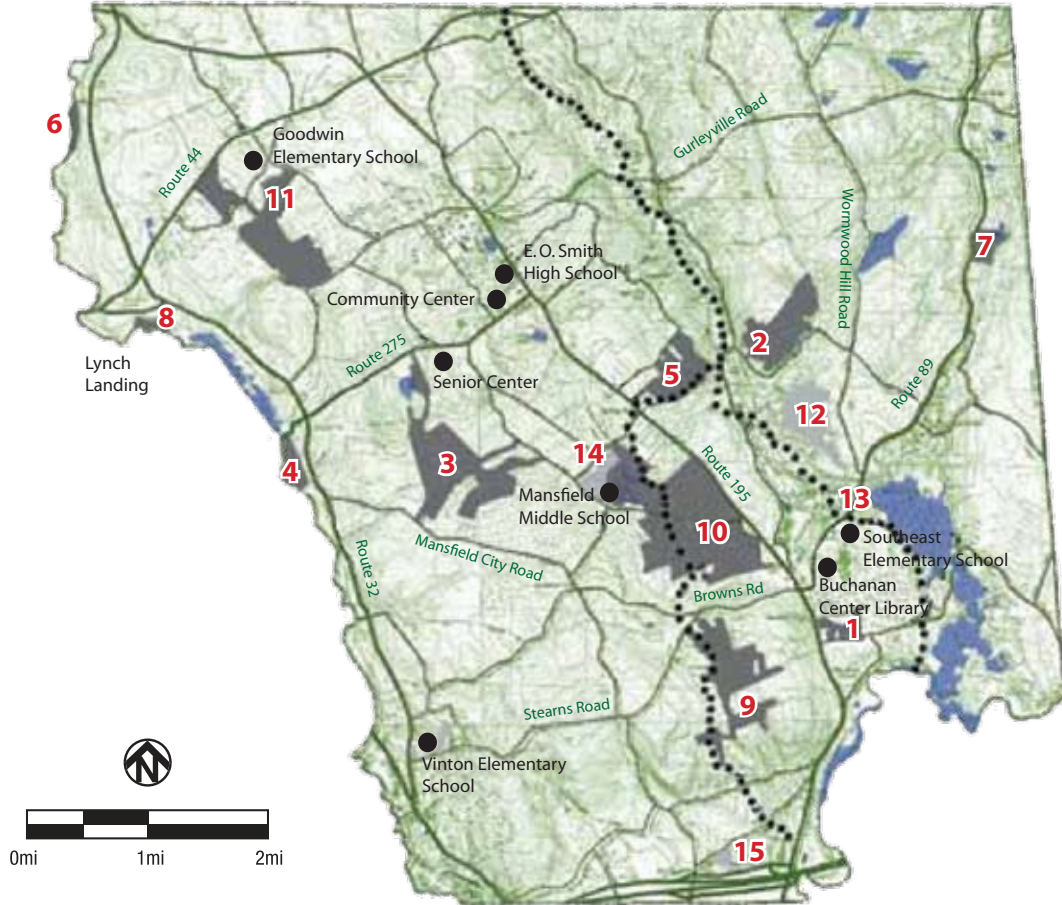


Take a Walk With Us!

Go to www.MansfieldCT.org/TrailGuides/ to download interpretive trail guides for parks and preserves owned and managed by the Town of Mansfield. These trail guides contain up-to-date information and maps of Mansfield's Parks and Preserves in an easy-to-use format. You may also purchase all trail guides in a sturdy folder for \$7.50 at the Mansfield Community Center. Both public and private organizations offer recreation opportunities in open spaces in Mansfield and many of them are linked to town parks. For more information about these organizations click on www.MansfieldCT.gov.



parks & preserves

- 1. Commonfields** Access from Bassetts Bridge Road. Parking area, trail, interpretive information, signs and bird blind will be installed by 2008.
- 2. Coney Rock Preserve** Access from Chaffeeville Road (Town land) or Woodland Road (Joshua's Trust land). Trails climb through old pastures reverting to forest. Cliff on top offers views of Mansfield Hollow State Park.
- 3. Dunhamtown Forest** Access from White Oak Road. Loop trails and connecting trails to Dunham Pond Road and Max Felix Drive wind through mature forest. Managed as a demonstration forest.
- 4. Eagleville Preserve** Access from Eagleville Dam through State land. Loop trail along scenic bend of Willimantic River and through old pasture reverting to forest.
- 5. Fifty-Foot Cliff Preserve** Access from behind Mansfield Historical Society on Rte 195. Forested trails lead to cliff views across the Fenton River Valley and Mansfield Hollow State Park. Nipmuck Trail connects to adjacent State land.
- 6. Merrow Meadow Park** Access from Merrow Road. Loop trail through meadows, wetlands and forest. Part of trail paved for handicapped access. Canoe launch along the Willimantic River.

- 7. Mt. Hope Park** Access from Rte 89. Loop trail through meadows and woodlands leading to a pond and the Mt. Hope River.
- 8. River Park** Access from Plains Road. Willimantic River Greenway trail leads to Lynch Landing and Mansfield Depot. Handicapped accessible canoe launch, multi-use recreation field, and interpretive information will be installed by 2008.
- 9. Sawmill Brook Preserve** Access from Joshua's Trust's Wolf Rock Preserve parking area on Crane Hill Road. Follow the Nipmuck Trail past Wolf Rock, then along Sawmill Brook's wooded valley to Puddin Lane.
- 10. Schoolhouse Brook Park** Access from Clover Mill Road and Mansfield Middle School. Nineteen trails, including part of the Nipmuck Trail, through mature forests. Views of colonial mill sites. Park includes Bicentennial Pond Recreation Area.
- 11. Shelter Falls Park** Access from Birch Road. Waterfall and scenic rock formations along Cedar Swamp Brook. Connecting trails to UConn lands and adjacent DEP land. Map includes connecting UConn and adjacent DEP land and trails

recreation areas

- 12. Lions Club Memorial Park** Rt. 89, Warrenville Road
- 13. Southeast Park** Rt. 89, Warrenville Road
- 14. Spring Hill Fields** Spring Hill Road
- 15. Sunny Acres Park** Meadowbrook Road

scenic trails

- Lynch Landing**
Access from Depot Road to Willimantic River.
- Nipmuck Trail**
Regional trail with access at several road crossings.

Legend	Parks & Preserves	Recreation Areas	Hiking	Swimming
	Recreation Centers	Canoeing	Picnicking	X-C Skiing
	Nipmuck Trail	Fishing	Playground	Handicapped Accessibility <small>(Selected portions only, call ahead)</small>
	Lynch Landing	Football	Soccer	



Explore Mansfield's Parks by joining Friends of Mansfield Parks (FOMP) for the following family events.

CT Trails Day Walks

Join Mansfield P & R for CT Trails Day on June 3 and 4! A nationwide hiking initiative established by the America Hiking Society in 1993, CT Trails Day is organized by the CT Forest and park Association (CFA), founded in 1895 to protect Connecticut's forests, parks, walking trails, open spaces, and to maintain 825 miles of the Blue-Blazed Hiking Trail system. The complete walk schedule is available at www.ctwoodlands.org. The Mansfield Parks Advisory Committee offers the following free of charge:

Family Cruise on the Willimantic River

Join us for an easy flat-water trip for canoes and kayaks from River Park to Eagleville Lake. Choice of short or long (two mile) roundtrip. If you don't have your own boat, see p. 26 for kayak rentals at the Mansfield Community Center. Kayaks must be reserved at least 48 hours in advance at the Community Center for \$5 each and will NOT be available at the site. Participants are responsible for transporting the kayaks from the Community Center to River Park. Life Jackets required for all participants. Bring water: lunch optional. Moderate to heavy rain cancels. Sponsored by Mansfield Parks and Recreation Department and the Willimantic River Alliance. Please pre-register at the community center or online at www.mansfieldcc.com.

- Location: (411003-A) River Park
- Date: Sat., June 2
- Time: 10 a.m.-noon
- Fee: Free but please pre-register for this event.



Dorwart Preserve

Celebrate the CT Trails Day for a guided walk at Dorwart Preserve. This 55-acre preserve provides a valuable link between Mansfield's Lions Club Memorial Park and Mansfield Hollow State Park on the south and Coney Rock Preserve and Fifty-foot Cliff Preserve on the north. Together these properties create one of the longest contiguous loop trails in Mansfield. Enjoy the wildlife, wetlands, and peaceful forest of this preserve. Appropriate for families with children 5 and over.

- Instructor: *Naturalists, Sue and Tom Harrington*
- Location: Meet at Lion's Club Memorial Park off Rt. 89
- Date: Sun., June 3
- Time: 2-4 p.m.
- Fee: Free

Links

Both public and private organizations offer recreation opportunities in open spaces in Mansfield and many of them are linked to town parks. For more information about these organizations click on www.mansfieldcc.com.

Natural Areas Volunteers Program Continues to be Strong

It is that time of year again, the time when Mansfield Parks and Recreation takes a moment to recognize their Natural Areas Volunteers. This year the award goes to three distinguished Eagle Scouts for their trail enhancements: Keith Chasin for his bridge at Dorwart Preserve, Dan Vitullo for his bridge at Eagleville Preserve and Eric Wilson for his wildlife viewing platform at Sawmill Brook Preserve. Thank you to Keith, Dan and Eric!

In 2011, Mansfield Natural Areas Volunteers worked over 375 hours in Mansfield's Parks and Natural Areas. Natural Area workdays will resume in the fall. If you have questions, please contact Jennifer Kaufman, Parks Coordinator at 860-429-3015 x204 or KaufmanJS@MansfieldCT.org.



Eighth Annual Sam Dodd Natural Areas Volunteer Service Award given to Eagle Scouts Keith Chasin, Dan Vitullo, and Eric Wilson for their extensive trail enhancements in Mansfield Parks and Preserves.

Get Inspired and let your Imagination Become Reality!

Our Featured Kitchen of the Month



NOW OFFERING Design Consultation Service

STARMARK CABINETS



CAMBRIA

Starmark Cabinetry and Cambria Countertops Made in the USA

John French's
WILLIMANTIC INTERIOR DESIGN GALLERY

Serving The Community For Over 30 Years
Tuesday-Friday 9:30am-5pm; Saturday 9am-1pm • HIC #0564741
59 Church Street, Willimantic
860-423-6082