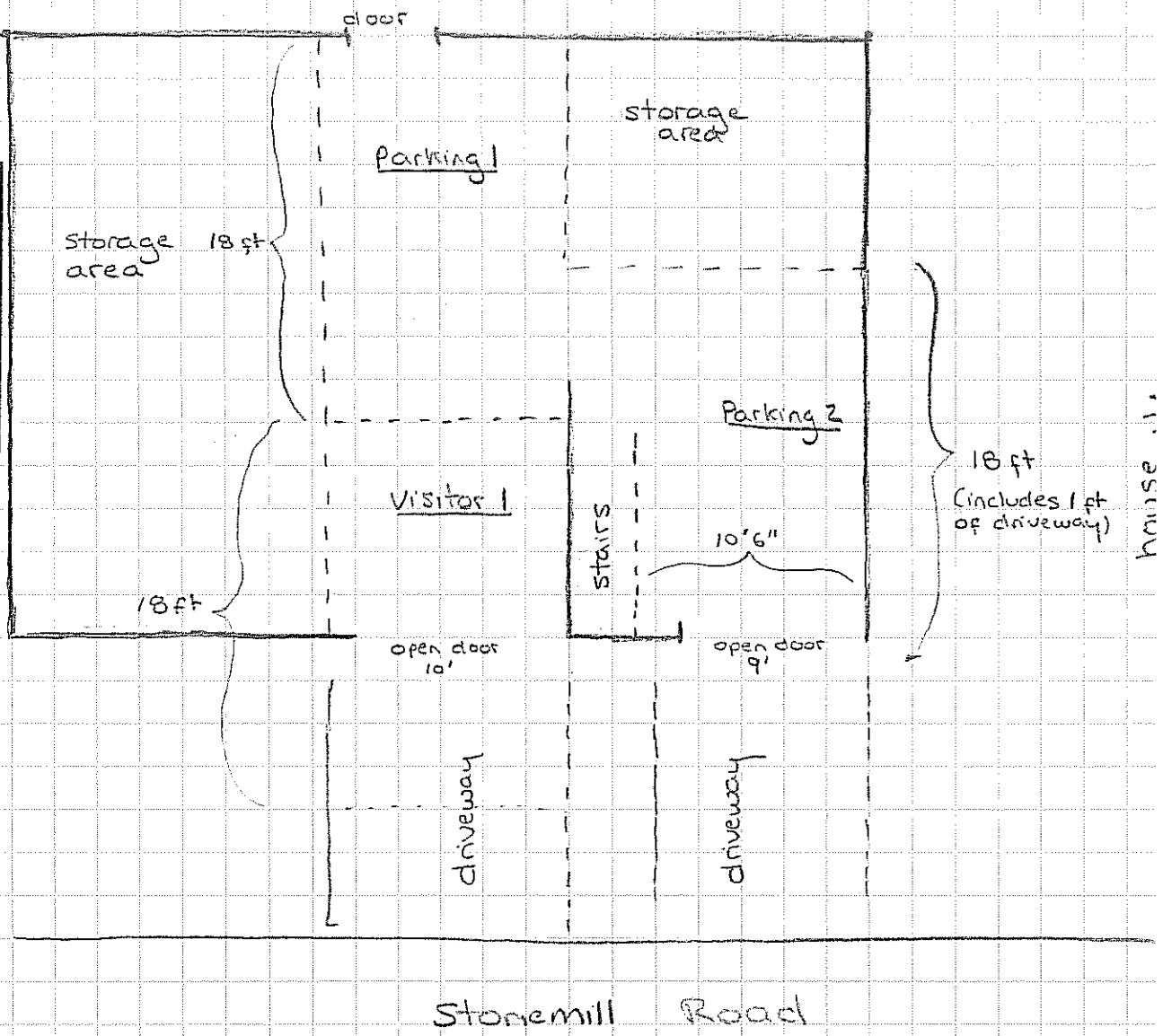


APPROVED
 PARKING AREA SITE PLAN
 NOV 01 2010
 TOWN OF MANSFIELD
 HOUSING INSPECTION



Here is a detail of the barn used for parking. It is to supplement the satellite photo showing the placement of house, barn, road.

Parking space "2" is 17 feet inside the barn, so we are utilizing 1 foot of driveway to create the required 18 foot length - there is no door covering the 9 foot wide opening into the space.

Visitor 1 space is using 10 feet inside the barn and 8 feet of driveway to create the space - there is no door covering the opening into the barn



- M MapGrid
- N towns
- A Dimensions
- A Address
- A ParcelID
- A Area
- A Streets
- A Parcels
- A powerlines
- wetlands
- water
- Town
- roads
- highways

APPROVED
 PARKING AREA SITE PLAN
 NOV 01 2010
 TOWN OF MANSFIELD
 HOUSING INSPECTION

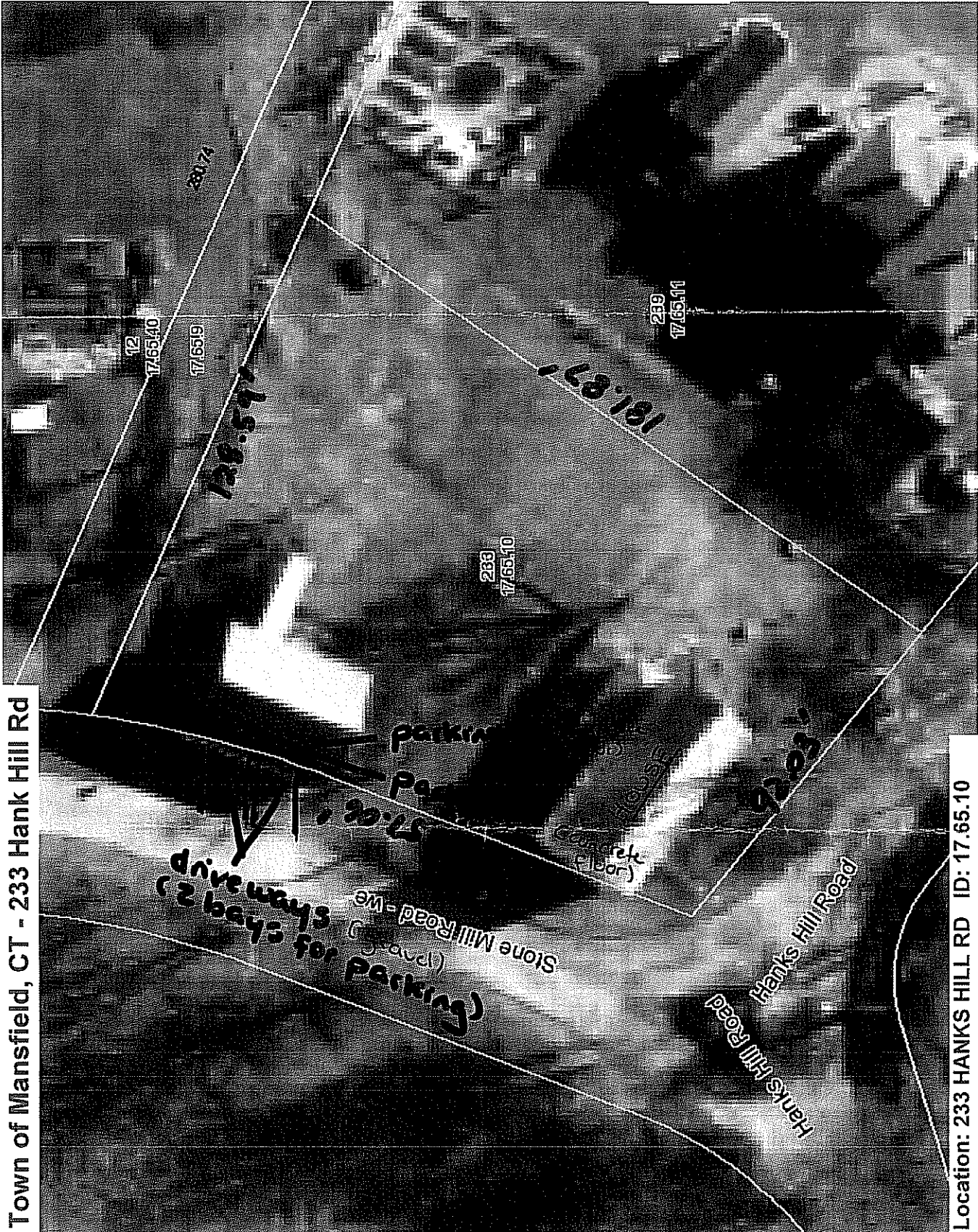


1 in = 35.36 ft

Printed:
9/23/2010



Town of Mansfield, CT - 233 Hank Hill Rd



Location: 233 HANKS HILL RD ID: 17.65.10

MainStreetGIS, LLC - www.mainstreetgis.com / info@mainstreetgis.com

Disclaimer: This map is for assessment purposes only. It is not valid for use as a survey or for conveyance

Barn has 2 full parking spaces (room for a 3rd possible)
 tenants will back in, not back out