

Parks & Preserves



Parks & Preserves

Plein Air Painting in the Parks

Looking for additional opportunities to paint with your peers, and get outdoors? Plein Air Painting in the Parks is a great way to enjoy and observe fall in the parks. View the location schedule below; meeting time is 10 a.m. on Saturdays this fall. Bring your own supplies, easels, chairs/stools, and paint (or draw, or sketch, whatever your fancy!). No instruction or supervision provided. Inclement weather cancels. All skill levels welcome.

- Dates:** Sat., Sept. 10 – Merrow Meadow Park
 Sat., Sept. 24 – Bicentennial Pond
 Sat., Oct. 8 – Mt. Hope Park
 Sat., Oct. 15 – Eagleville Dam
- Time:** 10 a.m.
- Fee:** FREE (No Registration Required)



Check out our website:
www.mansfieldct.gov/parksandpreserves. Find trails, learn about educational events, learn the rules of the trails, and find out how to rent kayaks, stand-up paddleboards, pavilions and more!

Eagleville Guided Paddle

Bring your kayak or canoe and join us for a guided paddle along the Willimantic River to Eagleville Lake and back. We will launch at the wheelchair-accessible canoe/kayak launch at River Park and Hilary Kenyon Garovoy, Limnologist, Environmental Scientist, and Certified Lake Manager of Northeast Aquatic Research, will teach us how to identify aquatic invasive plants and how to prevent their spread.

- Instructor:** Hilary Kenyon Garovoy
- Location:** River Park
 From the intersection of Rte 44 and Rte. 32, follow Rte 32 south for 0.5 miles and take a right onto Plains Rd. The parking lot will be after the railroad tracks on the right.
- Date:** Sun. Sept. 11
- Time:** 1:30 to 3:30 p.m.
- Fee:** FREE Preregistration by 9/9 is required
- Activity #:** 211001-A

Show Your For Local

Taste of Mansfield

www.tasteofmansfieldct.org

Taste of Mansfield is made possible by these community partners:

<p>MANSFIELD CONNECTICUT Your place to grow</p>	<p>Mansfield Advocates for Children Mansfield Agriculture Committee Mansfield Department of Human Services Mansfield Downtown Partnership Mansfield Economic Development Commission Mansfield Parks and Recreation Mansfield Public Library Mansfield Public Schools Mansfield Senior Center Storrs Farmers Market</p>	<p>UCONN COLLEGE OF AGRICULTURE, HEALTH AND NATURAL RESOURCES EXTENSION</p>
--	---	--

With over 850 acres of preserved land in Mansfield, Joshua's Trust offers great places to explore.

Joshua's Trust Conservation and Historic Trust
Est. 1966

Learn more at www.JoshuasTrust.org

GET INVOLVED

with your parks and preserves

Do you like to build things? Like to be outside? Parks and Recreation is looking for people of all ages who are independent workers interested in building bridges, wildlife observation decks and more in town-owned parks and preserves. Town staff will work with you on a design and getting the necessary permitting. We also have a small fund available for supplies directly related to the project. If you have a project in mind or would like a suggestion, please contact Jennifer Kaufman, at KaufmanJS@MansfieldCT.org or 860-429-3335.

Walktober



Celebrate Walktober from September 17-November 6! Enjoy the many free, guided walks and experience the natural, historical and cultural treasures of The Last Green Valley. The complete walk schedule, with directions and

descriptions, is posted on www.thelastgreenvalley.org. Below are some Walktober Events in Mansfield.

See the Forest through the Trees

Fall is the perfect time to learn about the benefits of sustainable forest management. Chris Kueffner and Lynn Stoddard will share their passion for their land and for healthy forests. We will start at the Storrs Adventure Park and walk through their forest to see examples of how they are managing their forest for recreation, wildlife habitat, water resource protection, carbon sequestration, and forest products, such as lumber, firewood, and maple syrup.

Walk Leaders: Chris Kueffner and Lynn Stoddard
Location: Meet at the Storrs Adventure Park, 2007 Storrs Rd, Storrs
Date: Sun., Oct. 2
Time: 1 p.m.
Fee: FREE
Activity #: 211002-A

Over in the (Merrow) Meadow

Join us for some family fun at Merrow Meadow along the Willimantic River! In a scavenger hunt, objects will be "hidden" in plain sight along the trail and our young sleuths will have to find them as they hike this fully accessible trail. Learn a little about camouflage along the way. There will be prizes. Most of the path is paved and flat, easily accessible by wheelchair or stroller. All ages welcome. Heavy rain cancels.

Walk Leaders: Naturalists Sue and Tom Harrington
Location: Merrow Meadow Park (From the intersection of Route 195 and Route 32, head south on Route 32 for .83 miles. Turn right onto Merrow Road and travel for 0.1 miles. Parking area entrance is on the left)
Date: Sat., Oct. 8
Time: 10-11 a.m.
Activity #: 211003-A



Fifty-foot with a View

What better place to go on a beautiful fall day than a place with a great view, led by naturalists that can answer questions about what we see!

We will take a casual walk through the forest, looking at whatever interests us along the way and be rewarded with an opening at the top of a cliff where we can see most of southern Storrs and beyond. Those who are adventurous can also walk down to the base of the cliff to view some interesting plants that live on the rocks.

Walk Leaders: Naturalists Sue and Tom Harrington
Location: Fifty-foot Cliff Preserve
 From Storrs Center, head south on Rt. 195. About a mile south of campus, look for the Mansfield Historical Society building on the left (across from the Spring Hill Inn). The parking lot for the trail is behind the building.
Date: Sun., Oct. 23
Time: 1 p.m.
Fee: Free
Activity #: 211005-A

250 Years - One Farm - One Family the Stearns of Mansfield's Mountain Dairy

Walk the fields and farm to learn how the farm grew over the 250 years. Learn the history of agriculture in one place and the effects of war and weather on the family and farm. Sponsored by Mountain Dairy and the Mansfield Agriculture Committee. **No dogs, please.**

Walk Leaders: Carolyn Stearns
Location: Meet at Mountain Dairy, 50 Stearn Road Park in the lot opposite the barn
Time: 10 a.m.-12 p.m.
Date: Sat., Oct. 15 (Rain Date 16)
Fee: Free
Activity #: 211004-A

Fall at Bicentennial Pond

Fall is a great season for a walk in the woods to enjoy the colors. We will stroll around the pond on the fully accessible trail while we learn a little about the plants in the area. This beautiful park was one that was visited on the very first Walking Weekend which has become Walktober.

Walk Leader: Naturalists Sue and Tom Harrington
Location: Bicentennial Pond Heading south from UConn on Rt. 195, turn right on Clover Mill Rd. Look for entrance to Bicentennial Pond, 1 mile up on the right.
Date: Sat., Oct. 29
Time: 1-2 p.m.
Fee: Free
Activity #: 211006-A

Parks Photos Wanted

Do you have a favorite photo of one of Mansfield's Parks and Preserves that you would like to share? Please submit to KaufmanJS@MansfieldCT.org and let us know who to credit and you might see your work on our website!

Take a Walk With Us!

Go to www.MansfieldCT.gov/trailguides guides to download interpretive trail guides for parks and preserves owned and managed by the Town of Mansfield.

parks & preserves

- 1. Commonfields**

Access from Bassetts Bridge Road. Features include trails, interpretive information and a bird blind.
- 2. Coney Rock Preserve**

Access from Chaffeeville Road (Town land) or Woodland Road (Joshua's Trust land). Trails climb through old pastures reverting to forest. Cliff on top offers views of Mansfield Hollow State Park.
- 3. Dorwart Preserve**

Access from Mulberry Road or from Lions Memorial Park off Route 89. Forested trails with diverse wildlife and woodland plants adjacent to Lions Memorial Park soccer fields and pavilion.
- 4. Dunhamtown Forest**

Access from White Oak Road. Loop trails and connecting trails to Dunham Pond Road and Max Felix Drive wind through mature forest. Managed as a demonstration forest.
- 5. Eagleville Preserve**

Access from Route 275 across from the Eagleville Dam through State land. Loop trail along scenic bend of Willimantic River and through old pasture reverting to forest.
- 6. Fifty-foot Cliff Preserve**

Access from behind Mansfield Historical Society on Route 195. Forested trails lead to cliff views across the Fenton River Valley and Mansfield Hollow State Park. Nipmuck Trail connects to UConn land.
- 7. Merrow Meadow Park**

Access from Merrow Road. Loop trail through meadows, wetlands and forest. Part of trail paved for handicapped access. Canoe launch along the Willimantic River.
- 8. Moss Sanctuary**

Access from South Eagleville Road (behind the Mansfield Apartments) or from Birchwood Heights Road. Parking is available at the Mansfield Community Center. Two loop trails through a variety of forest setting and around a pond.
- 9. Mt. Hope Park**

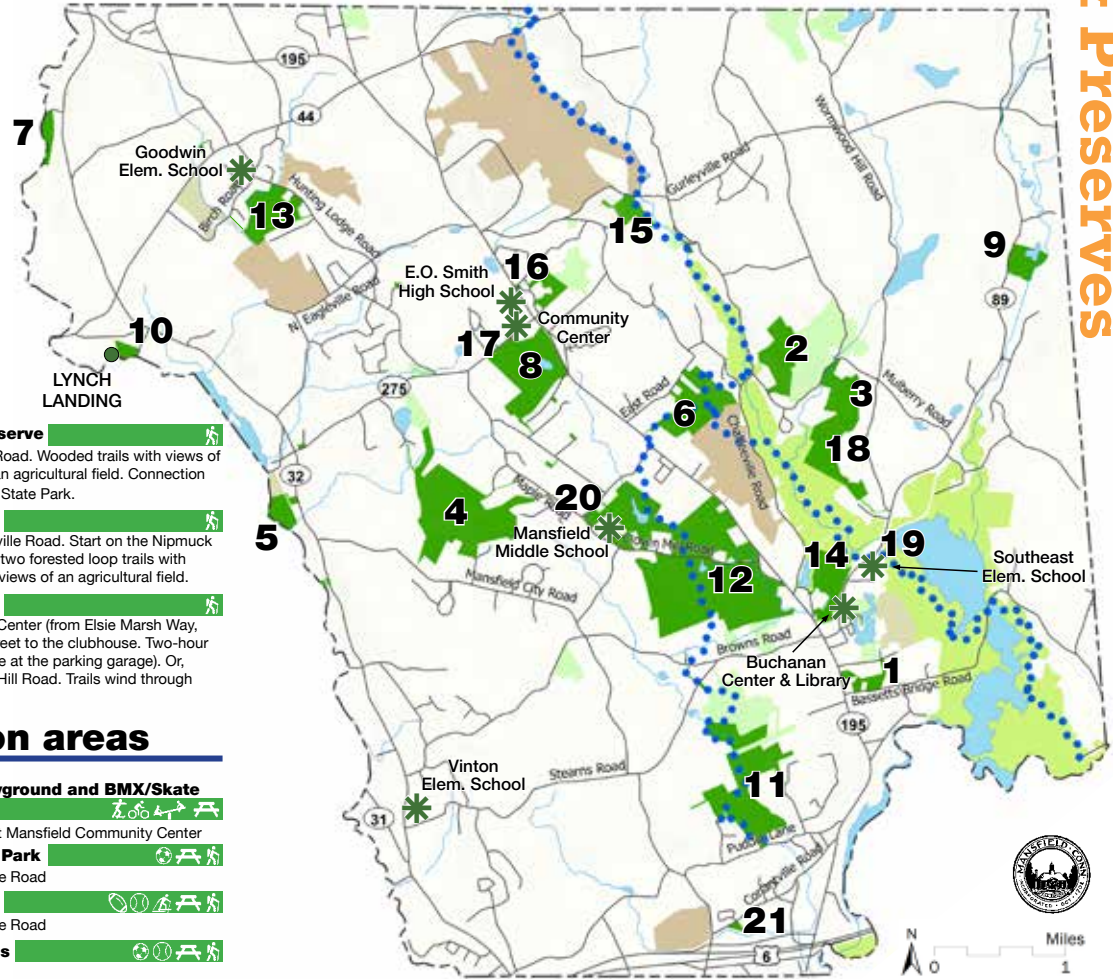
Access from Route 89. Loop trail through meadows and woodlands leading to a pond and the Mt. Hope River.
- 10. River Park**

Access from Plains Road. Willimantic River Greenway trail leads to Lynch Landing and Mansfield Depot. Features include a handicapped accessible canoe launch, multi-use recreation field, and interpretive information.
- 11. Sawmill Brook Preserve/Wolf Rock**

Access from Puddin Lane or from Joshua's Trust's Wolf Rock Preserve on Crane Hill Road. Follow the Nipmuck Trail along Sawmill Brook's wooded valley.
- 12. Schoolhouse Brook Park**

Access from Clover Mill Road and Mansfield Middle School. Nineteen trails, including part of the Nipmuck Trail, through mature forests. Views of colonial mill sites. Park includes Bicentennial Pond Recreation Area.
- 13. Shelter Falls Park**

Access from Birch Road. Waterfall and scenic rock formations along Cedar Swamp Brook. Connecting trails to UConn lands and CTDEEP land.



- 14. Southworth Preserve**

Access from Dodd Road. Wooded trails with views of Chapins Pond and an agricultural field. Connection to Mansfield Hollow State Park.
- 15. Torrey Preserve**

Access from Gurleyville Road. Start on the Nipmuck Trail and connect to two forested loop trails with glacial features and views of an agricultural field.
- 16. Whetten Woods**

Access from Storrs Center (from Elsie Marsh Way, follow Sherwood Street to the clubhouse. Two-hour free parking available at the parking garage). Or, access from Hanks Hill Road. Trails wind through forest and wetlands.

recreation areas

- 17. Community Playground and BMX/Skate Park**

S. Eagleville Road at Mansfield Community Center
- 18. Lions Memorial Park**

Route 89, Warrenville Road
- 19. Southeast Park**

Route 89, Warrenville Road
- 20. Spring Hill Fields**

Spring Hill Road
- 21. Sunny Acres Park**

Meadowbrook Road

scenic trails

- Lynch Landing**
Access from Depot Road to Willimantic River.
- Nipmuck Trail (Blue Dot Trail)**
Regional trail with access at several road crossings.

Ownership		Features	
Town of Mansfield	Recreation centers	Baseball/Softball	Playground
Joshua's Trust	Lynch Landing	Biking	Skateboarding
Federal land	Nipmuck Trail (Blue Dot Trail)	Canoeing	Soccer
State land		Fishing	Swimming
University land		Football	X-C Skiing
		Hiking	Handicapped accessible (selected portions - call ahead)
		Picnicking	

[†] Jeffrey P. Ossen Family Foundation Community Playground and Matt Barchus Memorial BMX/Skate Park